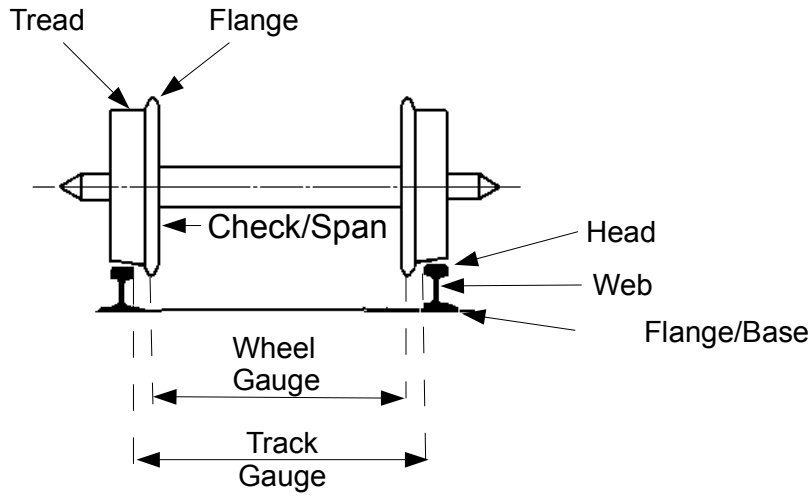
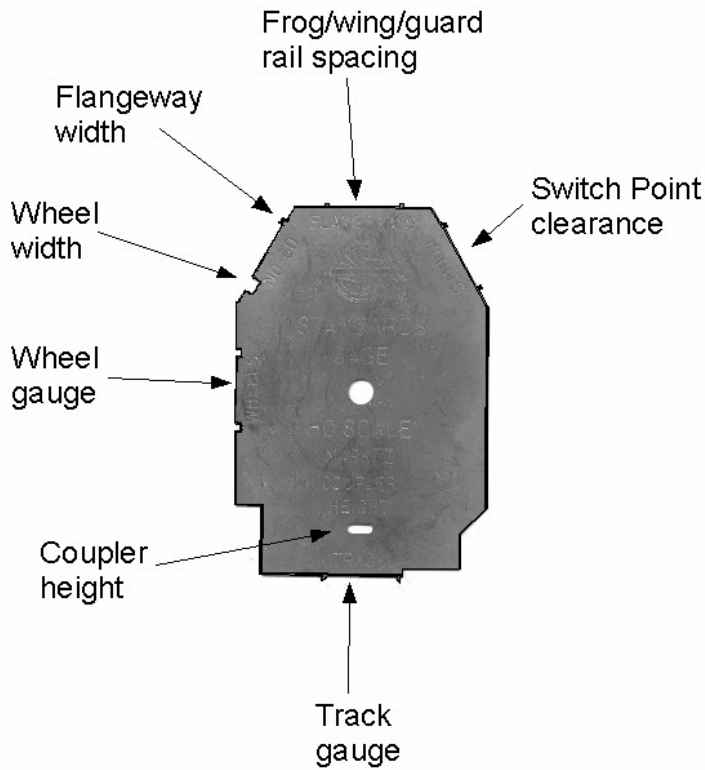


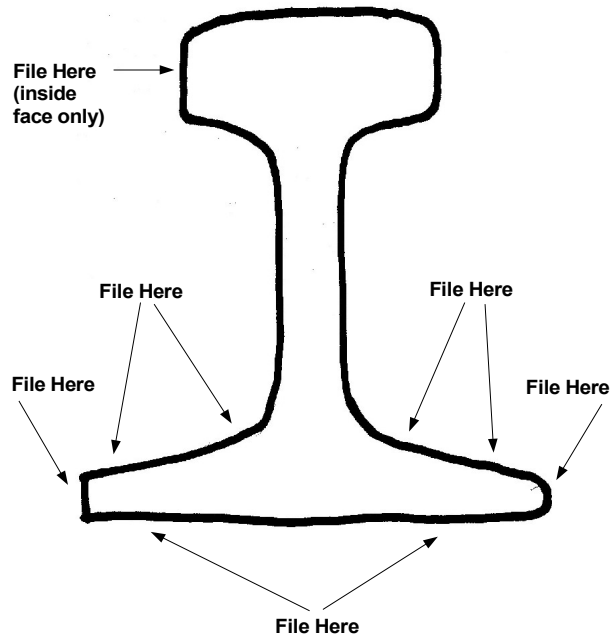
RP-25 Wheelset on Rails



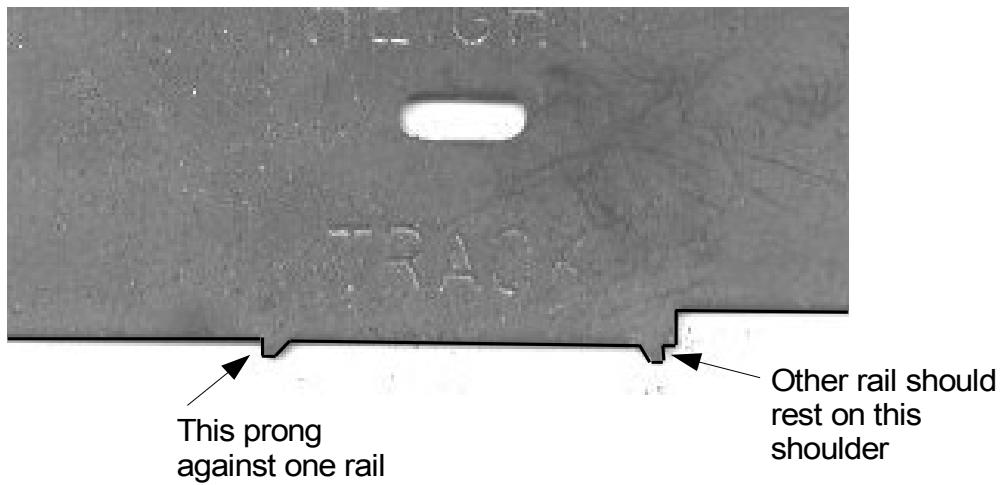
NMRA Standards Gauge



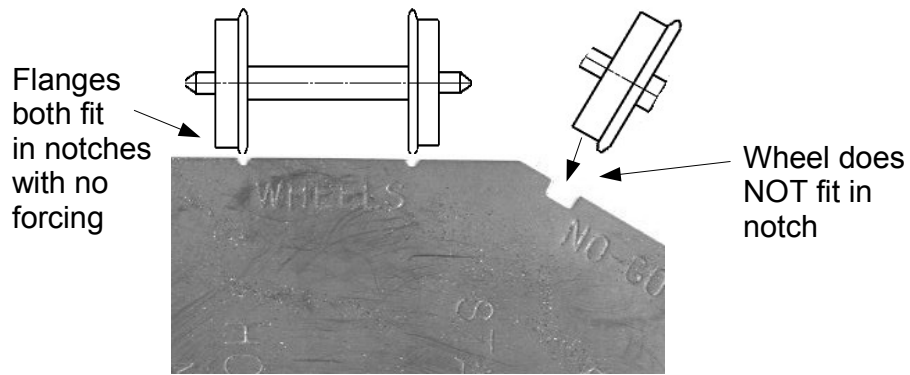
Filing Rail Ends to Fit Joiners



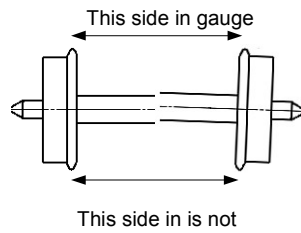
Checking Track Gauge



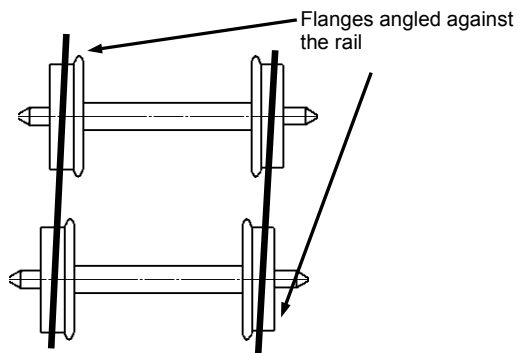
Gauging Wheels



Axle Bent Wheels not parallel



Two wheelsets offset Wheels not centered on axles



Turnout Parts

Stock Rails

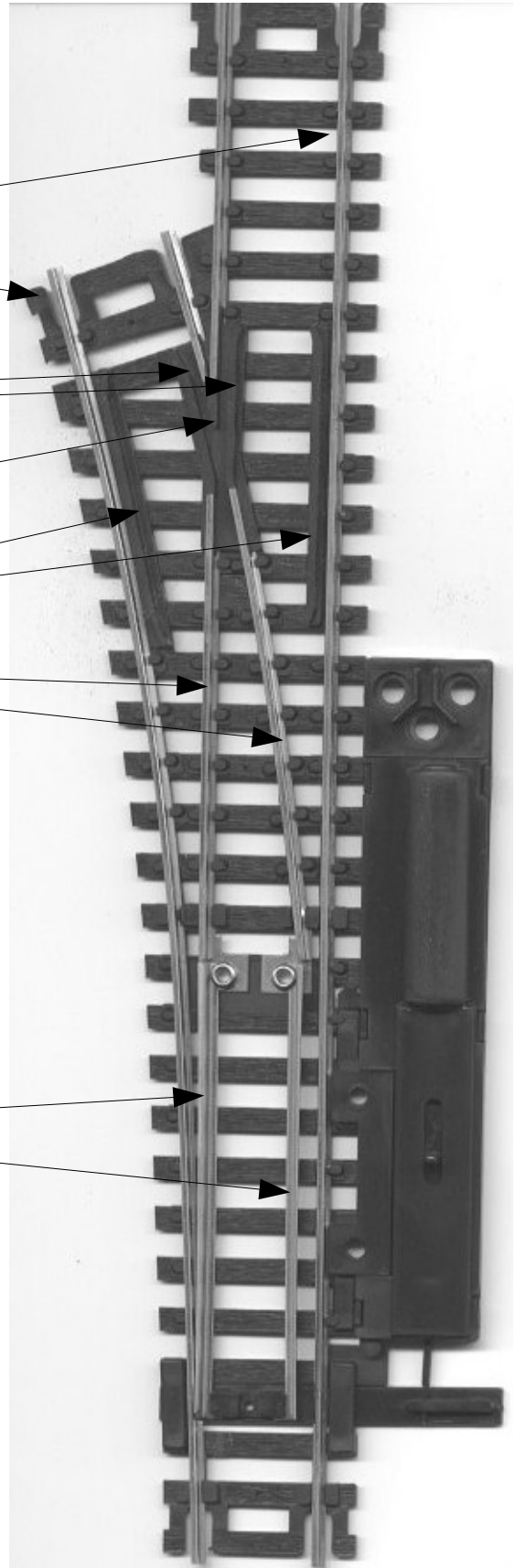
Wing rails

Frog

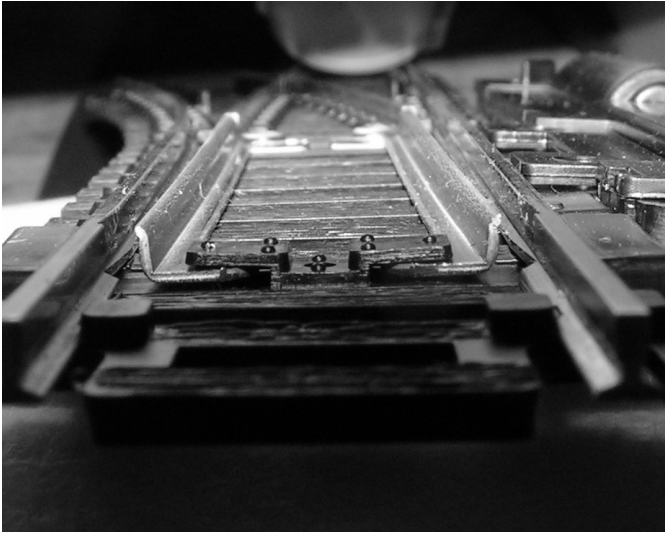
Guard Rails

Closure rails

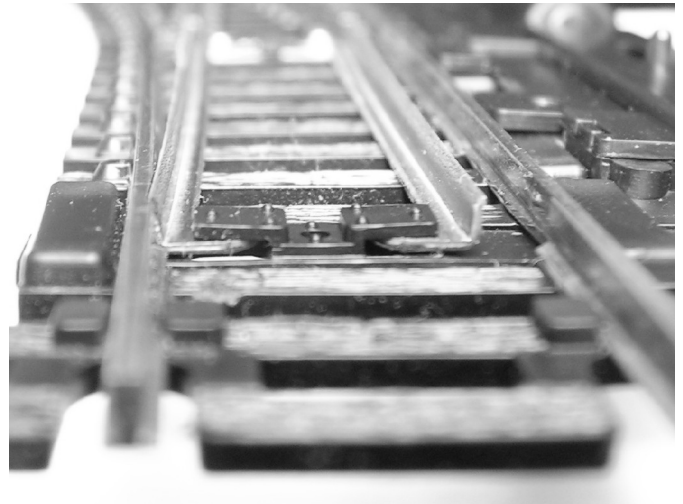
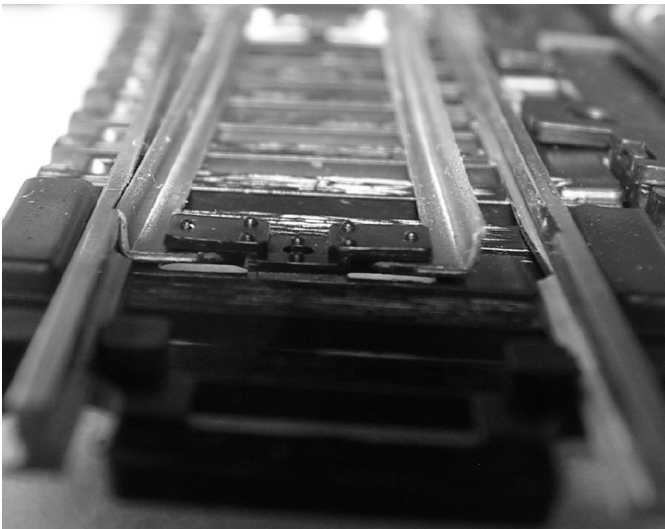
Points



Points Before Filing



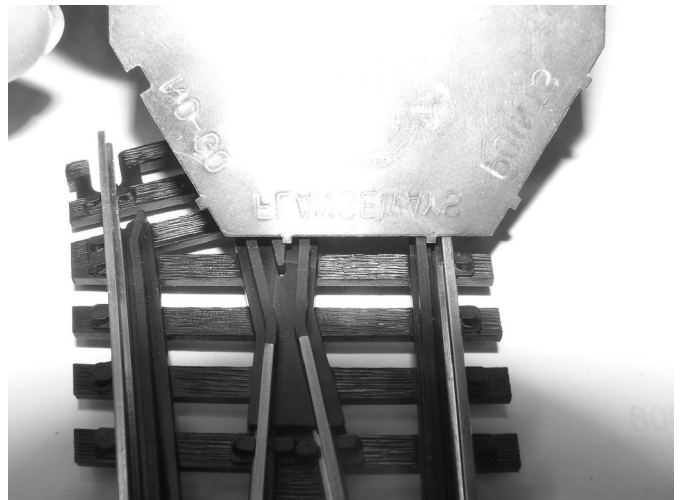
Left Point After Filing

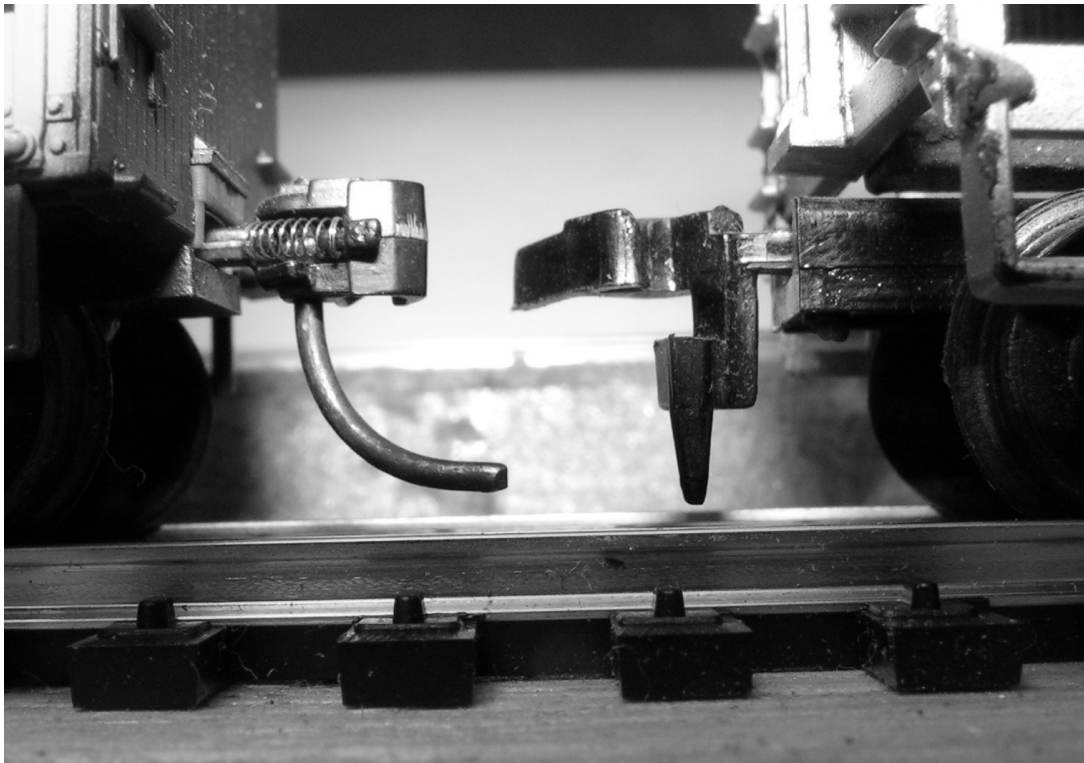


Flangeway Check-Too Wide

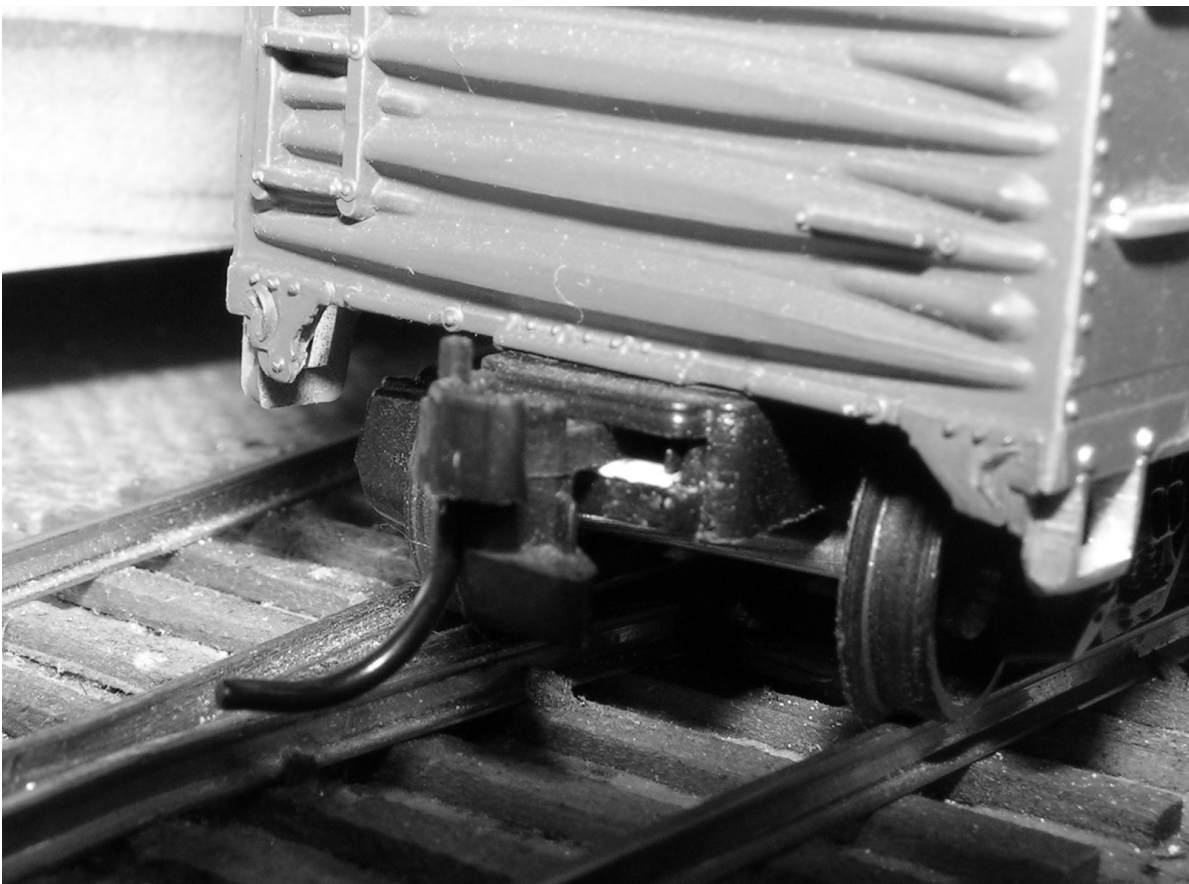


Guard Rail - Too Close to Frog

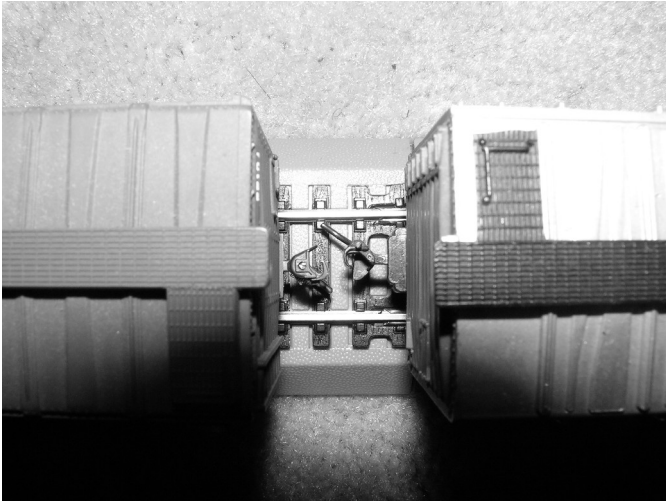




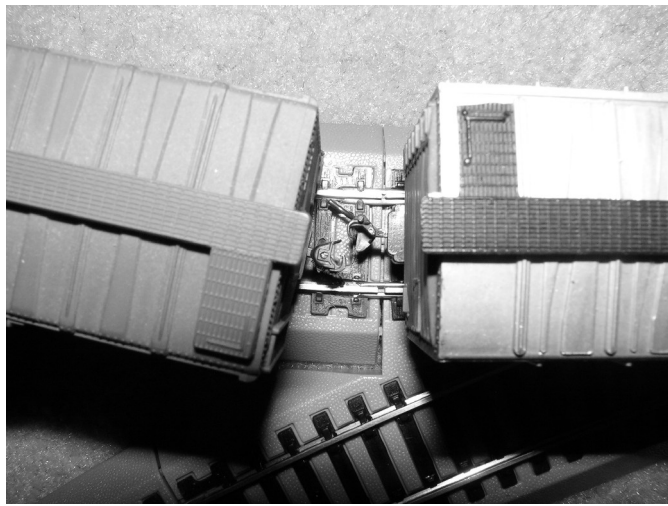
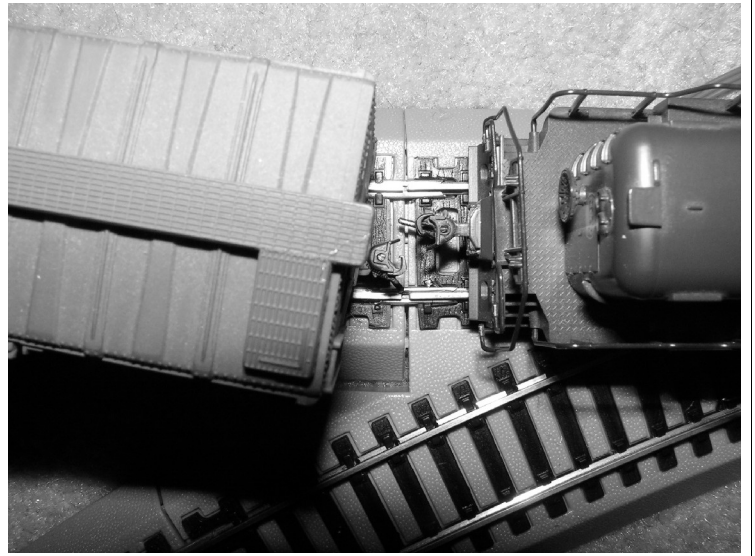
Glad hand on Kadee (left) clears track as it should. Horn hook pin is too close to rails, should be trimmed.



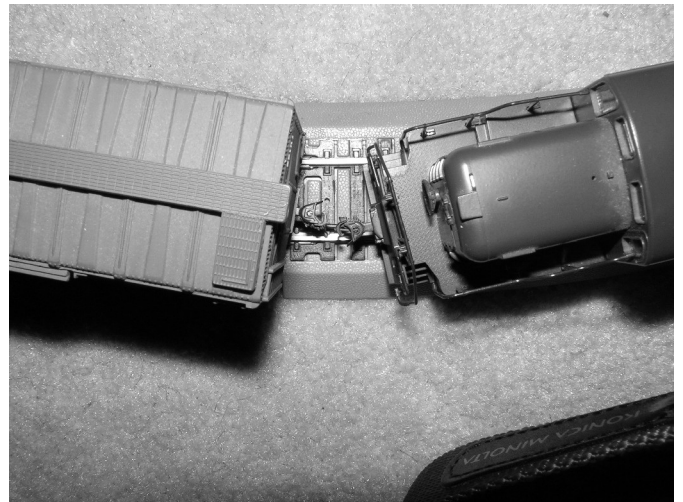
Styrene shim under coupler shank holds coupler up to correct height



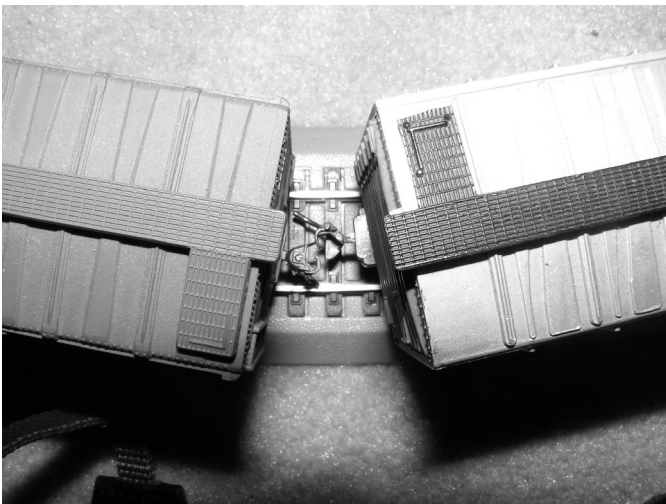
Body mount (left), truck mount (right) on straight



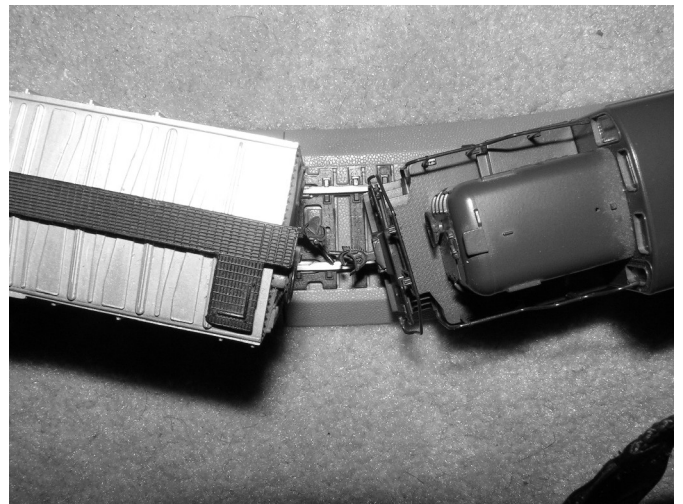
Body mount on curve, truck mount on straight



Body mounted on curve, loco on curve

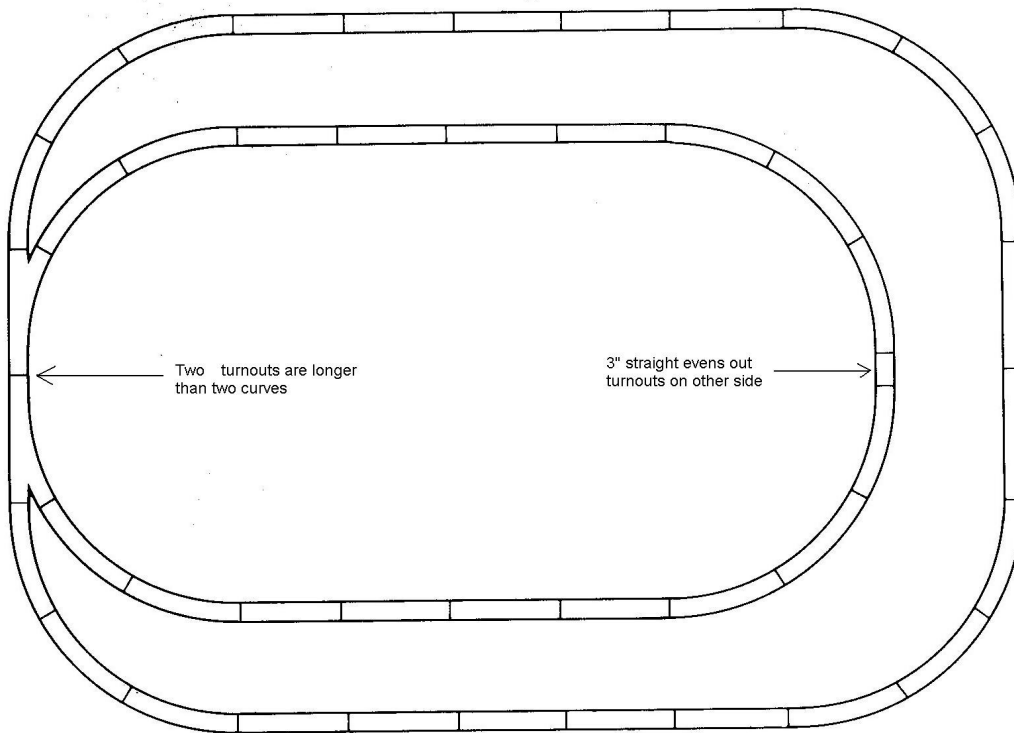


Body mount and truck mount on curve

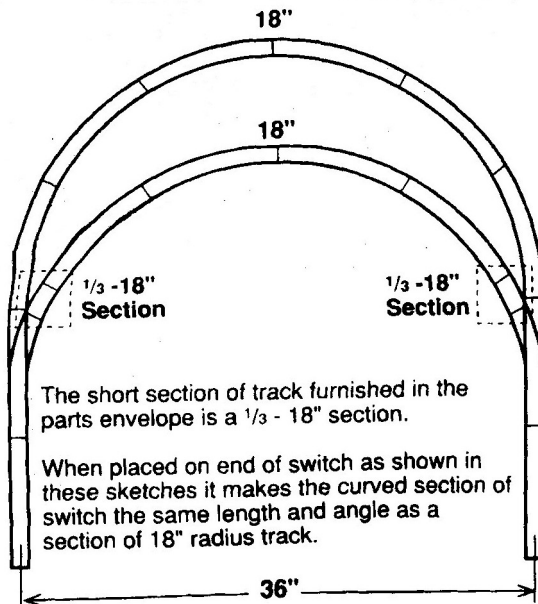


Truck mounted and loco body mounted on curve

Bachmann EZ Trak Turnouts are longer than a curve section.



Atlas snap turnouts are shorter than one curve



Resources:

www.nmra.org NMRA National web site. Standards and other resources, links

www.carolinasouthern.org Carolina Southern Division website. Local events, hobbyshops,
CSDHelp@yahoo.com email Help Line.

Tune up your layout Pt 1 Model Railroader May 2007 Cleaning, couplers

Tune up your layout Pt 2 Model Railroader June 2007 Track and turnout gauging

MR Discussion thread Nov 07

Replacement wheelsets:

Kadee

Reboxx <http://www.reboxx.com/> (many axle lengths for exact fit)

Walthers

NWSL (Northwest Short Line)

Jay-Bee

Track Cleaning cars:

Aztec Manufacturing www.aztctrains.com

Ribbonrail (Walthers catalog)

CenterLine www.centerline-products.com

homemade masonite slider under boxcar (see MR May07 article above)