



THE BRASS POUNDER

Newsletter of the Carolina Southern Div, Mid-Eastern Region, National Model Railroad Assoc.
Volume 8 Number 4 November 2008

Next Division Meeting

Date: November 15, 2008
Brookford Town Center
Brookford, NC

11:00 - 2:00 Special work session at Train Town -- we will have some projects lined up for folks to do.

2 pm Meeting in the Conference Room at the Brookford Community Center (down the hall from Train Town.)

Check web site for updated info:

www.bytedesign.com/CSDiv/timetable.htm

Rick Knight's Knight Brothers & Dad RR
16631 Glenfurness Drive
Huntersville

December 13 10:00 - 4:00
Wades Train Town Open House
Brookford Town Center
Brookford, NC

June 12-14, 2009 SER Regional Convention
Pensacola, FL
<http://www.trainweb.org/pmrc/Convention/home.htm>

July 5 - 11, 2009 NMRA National Convention
Hartford, CT <http://www.HN2009.org>

Announcement from Superintendent

Our Asst. Superintendent, Steve August, has decided to throw his hat into the ring for election to the position of Regional Director. The three Director positions are elected at the next MER meeting in October 2009. After discussion with Regional "gurus" it is apparent that Steve will have a much better chance of being elected if he is serving as a Division Superintendent. Therefore, at the November meeting I will be stepping down as Division Superintendent. Per our ByLaws, Steve will automatically become the Division Superintendent, and I will find something else to do within the Division – and maybe get back to doing some modeling on my own layout! Thanks for the opportunity to serve as your Division Superintendent for the past four years!

Rick

Calendar of Events

November 8 10:00 - 4:00
Wades Train Town Open House
Brookford Town Center
Brookford, NC

November 15 CS Division Meeting
11:00 Work session on layout
2:00 Division meeting
Brookford Town Center
Brookford, NC

December 6 1:00 - 5:00
Open Houses
Jack Parkers P&W Model Railroad
12012 Abermathy Road, Charlotte NC

AND

CAROLINA SOUTHERN DIVISION SURVEY

By Rick Knight

By now I hope that you have received a copy of the survey of the membership of the Carolina Southern Division. And many thanks to those of you who have already returned it to me. As an eternal optimist, I am hoping for a 100% return; as a confirmed realist, I'll be happy with a healthy return. Each and every survey returned will allow us to make this organization better.

The Carolina Southern Division has come a long way in the past four years. Four years ago a turnout of twelve (12) members at a meeting was huge. The total membership numbered about 17 folks. Today there are about 87 members. But about half of that number are NMRA members who were automatically made members of the Division when the National changed the membership policy several years ago. As I look at the roster, about one-third of the members are very active in the Division and about another dozen or so are very active in the hobby in other groups. That accounts for about one-half of the membership. Of the other half of the membership, I do not know a lot.

Your answers to the questions in the survey – and any additional comments (all of which are welcome) – will help us steer the Division in the coming year. If you are interested in layout tours, we will schedule them. If you are interested in prototype tours, we will schedule them. If you are interested in clinics and sessions to improve your modeling skills, we will schedule them. And remember that it is a two-way street; we are looking for folks to share their skills and talents with us. We would like to tour your layout. We

would like to watch as you demonstrate your talent in wiring, weathering, painting, or whatever.

Please help us out. Give us your thoughts and ideas. We are starting to put together a calendar for 2009 and the sooner we get your input, the sooner we can complete the planning process – and you can start to include dates in your calendar.

National Corner

This item was recently received from NMRA Headquarters:



This ad is for the United Way's Combined Federal Campaign. For the first time, the NMRA is listed among the charities on the CFC list. Any Federal employee can designate the NMRA as a recipient of his or her donations.

Yes, this is VERY late -- the campaign ends at the end of the year, but if you're able to squeeze one into your newsletter, it could benefit the NMRA.

Thanks in advance!

Gerry Leone, MMR Deputy Chair	Jan Wescott Dept Manager Membership Services & Promotion Department
----------------------------------	--

AP Report
By Dave Chance
AP Chair

I just got confirmation that Jim Allen has earned his AP for Model Railroad Engineer, Electrical. This is his third AP award.

The following awards have been earned so far in 2008 and are as follows:

1. Dick Bronson --- Golden Spike
January 24, 2008
2. Dick Bronson --- Association Volunteer AP,
January 30, 2008.....his first!
3. Jim Allen --- Master Builder Scenery AP,
March 11, 2008
4. Jack Monette --- MRR Engineer Civil AP,
March 31, 2008
5. Steve August --- Chief Dispatcher AP,
March 31, 2008.....his first!
6. Jim Allen --- MRR Engineer, Electrical AP,
September 1, 2008

We have several people currently working on other AP submissions. Current projects include but are not limited to the following:

Dick Bronson is working on Electrical and Civil Engineering APs.

Jim Allen is working on MB Locomotives AP.

Steve August is working on three APs, but he hasn't let me know which ones.

Jack Parker is working on his seventh AP, MB Cars.

Gil Brauch is working on Electrical Engineering .

Dave Chance is working on MB Locomotives, MB Cars, and Civil Engineer.

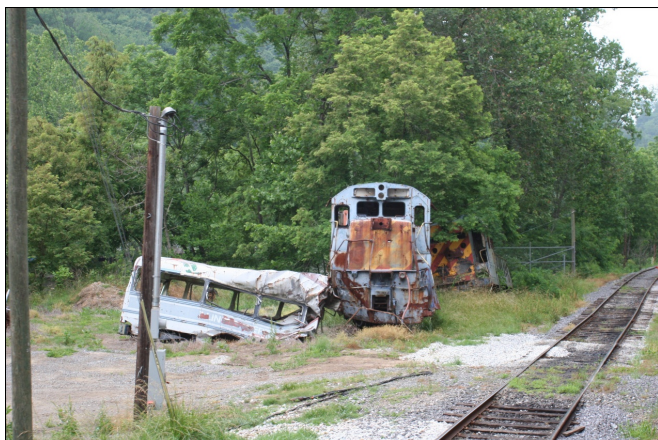
Several others have told me they are working on at least one AP project.

A TRIP ON THE GREAT SMOKY MOUNTAINS RAILROAD
by Steven P August

Recently, several members of NMRA MER Division 12 took a trip on the Great Smoky Mountains Railroad. The historic railroad offers a variety of excursions through the North Carolina Mountains. Our group took the trip from Dillsboro to Bryson City. Departing from Dillsboro and following the Tuckasegee River, the train wound through some great scenery. The round trip excursion was approximately 32-miles and took 5 hours.



Not only was the scenery beautiful but the train passed some historical sites also. Namely the location where the blockbuster hit "THE FUGITIVE" starring Harrison Ford filmed one of the most colossal train scenes ever undertaken. The scene in the movie lasted about 60-seconds, but took nearly 10 weeks to plan, 4 days to shoot and everything had to happen with one take. I guess there are not a lot of 650,000 pound U18B's sitting around ready to be destroyed. When the shooting was finished and dust had cleared, one camera was embedded under 26 feet of dirt and took nearly 8 hours to dig out. The remains of the locomotive can still be seen along the tracks.



As the trip continued up the mountain being pulled by our vintage GP-9, we noticed many sites along the way including old 1950's cars buried along the banks of the river in an effort to stop erosion of the banks. There is also a lot of canoeing and swimming along the river.

There are many excursions available on the Great Smoky Mountain Railroad including a dinner train, the POLAR EXPRESS run for kids and also the GREAT PUMPKIN run in the fall.

The trip ended at Bryson City, a city incorporated in 1887, and named for Colonel Thadeus Dillard Bryson. Bryson City soon connected with other towns like Asheville and Murphy with the establishment of the railroad.



Along with many other sites in Bryson City is the

Smoky Mountain Trains Lionel Museum. The museum was created to share and help expand the hobby of Model Railroading with all ages of individuals. The museum boasts one of Southeast's largest collections of Lionel Trains (more than 6,000 units) and two operating layouts. Kids of all ages can come in and tour the layouts and even operate various items on the layouts. The museum also offers a small hobby and retail shop on the premises.

All in the group had a memorable trip on board the GREAT SMOKY MOUNTAINS RAILROAD and hope to be able to go back again soon.

**Potomac Junction 2008
Mid-Eastern Region
NMRA Fall Convention**

Reston Virginia -- October 16 – 19, 2008
Dave Chance

I'm sure that some of you have never attended a Mid-Eastern Region Convention or any model railroad convention. I think that if you ever do, you will want to go at every opportunity. This year's convention in the Washington, DC area, at Reston, VA, was a very well run event and offered many activities for all. There were prototype tours, self guided layout tours, and clinics by many different experts, a "white elephant" sale, an auction, a model railroad contest, a photo contest, and a "My Favorite Train" contest. The business end of the convention included the "board" meeting, the awards presentation at the banquet, and the annual members meeting. While I didn't attend all events, I attended as many as I could fit into the schedule.

Michele and I left Kannapolis around 1:00 pm on Thursday, October 16, and arrived in Reston about 8:00 pm. The first adventure was finding the hotel; it seems that local laws prevent the hotel from having a large sign near the road. They have a large sign on their building, but it

can't be seen from the direction we were going. Oh well, it only took about 15 minutes before we returned and found it. After checking-in we went to registration but were too late to register. We met lots of friends, some from our division, like Dick and Karen Bronson, Steve August, Fred Miller, Roy Becker, and Tom Warlick. From Division 13, I saw John Jonoski and Don Jennings. I'm sure there were others that I can't recall and others that I didn't see.

Friday morning, we started our day with a buffet breakfast and then off to the clinics. We went to "Sawdust Scenery" by Noll Horan, MMR, and "Constructing the Sheafe Warehouse" by Fred Willis, "Making Dwarf Signals" by Marshall Abrams, "Helix Design Considerations" by Mark Brunton, and some others. Early on Friday, actually at breakfast, we met Gary Tilley from Oklahoma City. Later we met his wife Sharon. They were on a trip to see some of the sites in the nation's capitol and planned the trip so they could attend the MER convention.

We went to dinner at Chili's and then on to New Jersey to see Dale Latham's HO scale "Piedmont Southern Railroad". Wow! What a layout! The layout, 22' x 24', is fitted into a converted two car garage with entrance from their family room. Although it has a slight "nod under" as you enter the room, there are no "duck unders". It is an "around the walls" layout with a center peninsula.



The PSRR is a freelance railroad set in the Blue Ridge Mountains and the Shenandoah Valley. This layout is featured in Kalmbach's "Great Model Railroads 2009", and a picture of the layout was in October issue of Model Railroader, page 43. The layout's structures are mostly scratch built with some kit bashed. Dale has won three first place awards, two "Blue Lantern" awards, and two "Best in Show" awards at MER conventions with these structures. It is truly a beautiful layout.



On Saturday, Michele built trestle bents for a bridge, on a jig she also built in an extra fare clinic, and attended several other clinics. I spent most of Saturday in the contest room, judging the

almost 50 entries. The quality of these models varied from average to outstanding. There were no diesel or steam locomotives entered which is very unusual. I look forward to judging again next year.

Both Michele and I had a great time, learned a lot, and both of us hope we can go next year to Hagerstown Maryland in October. We may even go to the NMRA convention in Hartford, Connecticut in 2009.

Ed. Note: Dave sent along many pictures of excellent modelling on the PSRR. In keeping with my penchant for finding something to learn from every layout visit, I selected photos for the article that all show how foreground scenery blends in with the painted backdrop as well as some great structures and scenes. See the division web site for more photos of some terrific modelling. JH

<i>The Division Brass</i>	
Superintendent.....	Rick Knight
Asst. Superintendent.....	Steve August
Clerk.....	Jack Haynes
Paymaster.....	Dick Bronson
Director 2008.....	Fred Miller
Director 2009.....	Jack Monette
Director 2010.....	Roy Becker
AP Chairman.....	Dave Chance
Webmaster.....	Gil Brauch
Newsletter Editor.....	Jack Haynes

Division Website:
www.bytedesign.com/CSDiv/

Submissions For Brass Pounder

Next Issue	Submission Date
January 2009	December 15, 2008

Articles are welcome on any railroad topic, model or prototype. Your editor is available to assist in preparing the materials.

Editor: Jack Haynes: jbh108@earthlink.net
 704-296-2493



Official Publication of the Carolina Southern Div, MER, NMRA
 November 2008 – Volume 8, Number 4
 7317 Easen Court
 Charlotte, NC 28211