

NMRA



THE BRASS POUNDER

Newsletter of the Carolina Southern Division 12, Mid-Eastern Region, National Model Railroad Association

Superintendent's Corner

By Chad Barnette

Division Coming Events

Come join us at this year's Historic Spencer Shop Train Show at the NC Transportation Museum

May 16th and 17th

Hey folks! Happy May to you and yours. I'm coming to ya a little late this month I know, but life has a way of getting busy sometimes. This month we'll have an abbreviated edition of the Brass Pounder. I am hopeful that we may get a submission or two from those of you who've been thinking about contributing. Thank you ahead of time.

For this month our activity is going to be the Historic Spencer Shop Train Show at the North Carolina Transportation Museum. This is always a good time, and is quite the show. We'll have a table setup to provide information about

Carolina Southern to the public.

Come on out and say hello to Alan and friends with the Metrolina Model Railroaders' layout that's now setup for it's typical summer stint at the Museum. See if you can spot all the Easter Eggs!

Speaking of which, there's something interesting coming our way. Tune in over the next couple of issues to find out more.



Editor's Notes

By Chad Barnette

Hey everyone! With things so busy at work and home I truthfully haven't done much on my basement layout lately. That's all about to change thankfully. I've recently purchased two lengths of Atlas flex track which I'm planning to join to my Kato Unitrak. I really like the reliability and ease-of-use that the Kato turnouts offer, so I'm anxious to see how this is all going to pan out.

From everything I've been reading, a lot of modelers seem to agree that Peco rail joiners are one of the better options when transitioning between Kato and Atlas track. The general consensus is that the Peco joiners grip the Kato rail profile very well while still giving a solid connection to the Atlas flex track. A few folks mentioned that Atlas joiners can sometimes feel a little loose on the Kato rail, while the Peco joiners make for a tighter and more dependable fit.

One thing I didn't realize at first is that the Kato Unijoiners can actually be removed pretty easily from the end of the Unitrak sections. Once those are popped out, you can slide on standard metal rail joiners just like you would with regular flex track. From there it mostly comes down to matching the rail height by building up the roadbed under the Atlas track with cork or foam so the tops of the rails line up smoothly.

I'm probably going to keep the Kato pieces in the areas where reliability matters the most — especially around turnouts and mainline junctions — while using the flex track to get those longer, smoother curves that are harder to achieve with sectional track alone. That really feels like the best of both worlds to me. The Kato system is said to be bulletproof operationally, but flex track opens up a lot more freedom for realistic track arrangements and flowing mainlines.

Honestly, it feels like a real milestone finally getting to this stage.. I've been staring at boxes of track and sketch ideas for long enough — it'll be nice to finally hear wheels clicking across the rails downstairs.

Click the link to email me articles & ideas:

editor@carolinasouthern.org

Division and Regional News

Wade's Train Town

Wade's Train Town – April Stats

Contributed by Ed Smith, MMR

Open houses: 4

Attendance: 134

Volunteers: Tim Rust, Chad Barnette, Joe Pulsone, Danny Poole

AP Updates from the Plywood RR Desk

Contributed by Neal Anderson, MMR



May Movements

We have a lot to list this month.

David Myers has turned in his paperwork on a bridge structure and received a Merit Award.

Dave Chance has turned in his paperwork on an engine and will receive a Merit Award.

Dick Bronson has turned in his paperwork on Chief

Dispatcher.

Jim Thomas has turned in his paperwork on Chief Dispatcher.

Richard Shulby took the class on Chief Dispatcher and needs to fill out the SOQ.

P.S. I have to spend more time at home. What day of the week do people want to run trains at the KK&L Railroad?

RMU 2026 In The Books

Contributed by Alan Hardee



I wish to Thank everyone who participated in the recent Railroad Modeling University, AKA as RMU at West Concord Baptist Church. From everyone that attended classes, the volunteers that presented their Wealth of knowledge of a wide variety of model railroading topics. We even had a special Paint & Sip class for spouses or any others who wished to participate. Two ladies decided to try it out and take home a beautiful painting they made themselves. A very special thanks to the behind the scenes volunteers who helped make this year's RMU possible for over 35 Registrants, especially after the late start. Thanks again for a great RMU and hopefully a better one next year.



Help (Still) Wanted

Contributed by Chad Barnette

CSD Program Chair – The Division needs someone to take on the responsibility of arranging for programs to be scheduled and presented at Division meetings. This can be accomplished by doing the presentation themselves, getting a commitment from someone else to make the presentation, or arrange for presentations to be conducted remotely (via Zoom). When the presentation has been established, the who, what, when, where needs to be sent to the editor of the Brass Pounder and the webmaster prior to the meeting so they let the members know about the upcoming program.

RMU Chair – The Division conducts Railroad Model University (RMU) annually to provide all model railroaders within our area the opportunity to attend a day-long event featuring clinics on a wide range of model railroad topics. The chair is responsible for recruiting member and non member clinician presenters as well as setting the schedule for these presentations. The chair also coordinates with other Division members to enable them to secure a location for the event, schedule and promote the event, and assist with any registration or A/V issues.

Please contact me (superintendent@carolinasouthern.org) if you have any questions or would like to volunteer.

The Workbench Wing

This month we got a look at Assistant Superintendent Richard Shulby's workbench. Thanks Richard! Here's what he had to say....

Following 4 years of living with in-laws (which meant NO model RR workbench), we finally moved into our barndominium last July. Unfortunately most of my model RR tools and equipment were stored in PODS, which finally showed up several weeks ago.

Below is a photo of the newly-reassembled workbench area. I hope to set up a separate station for the paint booth, small bench saw and 3D printer in the near future.

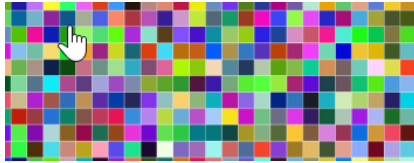




Carolina Model Railroaders

- Friday Setup: April 17th – 5:00PM until 8:00PM
- Saturday Setup April 18th – 7:00AM until 8:45AM

First Baptist Church, 1000 W Friendly Ave, Greensboro, NC 27401.



Digital Distractions

I found yet another fun channel on Youtube. Just when I think I've tapped into every corner of the hobby on Youtube, I find something new. I'm thinking I really have just scratched the surface. Sure, there aren't a ton that have a huge following, but there are a ton that have quality content. This is one of those and it's also just a feel good channel with father and son Gary and Ryan. They have a very fun dynamic together that's enjoyable to watch!



Check their page [here!](#)

Division Brass

<u>Superintendent</u>	Chad Barnette	superintendent@carolinasouthern.org
<u>Asst. Superintendent</u>	Richard Shulby	assistsuper@carolinasouthern.org
<u>Clerk</u>	David Myers	clerk@carolinasouthern.org
<u>Paymaster</u>	Tim Rumph	Paymaster@carolinasouthern.org
<u>Director 2028</u>	Alan Hardee	director1@carolinasouthern.org
<u>Director 2029</u>	Joe Skorch	director2@carolinasouthern.org
<u>Director 2027</u>	Ed Smith, MMR	director3@carolinasouthern.org
<u>AP Chairman</u>	Neal Anderson, MMR	Apchair@carolinasouthern.org
<u>Webmaster</u>	Joe Skorch	Webmaster@carolinasouthern.org
<u>Newsletter Editor</u>	Chad Barnette	editor@carolinasouthern.org
<u>Program Chair</u>	Still Looking!	program@carolinasouthern.org
<u>RMU Chair</u>	Alan Hardee	RMUchair@carolinasouthern.org