

THE BRASS POUNDER



**Newsletter of the Carolina Southern Division 12, Mid-Eastern Region,
National Model Railroad Association**

Volume 25 Number 11

November 2025

Division Coming Events

**CSD Annual Meeting
on January 17th, 2026**

**Newton Depot
starting at 11:00 am**

Superintendent's Corner

By Andrew Stitt

As you know, this month we celebrate National Model Railroad month. I hope each of you have or are taking the time to visit one or more of our members' layouts that are open during several Saturdays. Please check out the information on the CSD website for more information. If you are not able to participate, I encourage you to invite friends or neighbors to come look at some aspect of the hobby that you enjoy. It doesn't need to be a layout – a piece of rolling stock, a favorite locomotive, or structure from the present or past that is special to you will suffice. It opens up the gathering for conversation about this interest of ours.

The end of each year provides us with holidays that we look forward to. Often, we get together with friends or family or co-workers. I know that it is always interesting to see what the younger generations find is important to them. Certainly, most of us have interests that extend beyond model railroading. These interactions allow us to expand our horizons. Traveling or learning about new places potentially helps us to learn about new things that might become an interest. Crafts such as sewing, woodworking, or baking can provide our creative nature with another outlet.

So, it is with model railroading. Membership within our group provides us with an opportunity to interact with others with a similar interest. Whether through direct contact, via email or texts, or via phone conversations, we tend to learn or provide knowledge to others. This is a valuable aspect of belonging to the Carolina Southern Division. Thank you for being a member. I hope you will continue to do so.

Finally, let me announce that the CSD Annual Meeting will be held on Saturday, January 17, 2026 at the Newton Depot. As with recent years, there will be updated reports from the Treasurer, the Train Town director, the AP chairman, and myself. We will be holding elections for all the officers, and one board member, so if you are interested in one of these positions, please contact me directly if you have any questions. Nominations from the floor will be accepted, of course. Food and beverages will be provided by the Division. Registration will go live after January 1.

Editor's Notes

By Chad Barnette

November is upon us and we're knocking on Thanksgiving's door! The holidays are always exciting and they naturally seem to go hand-in-hand with trains. The excitement for this month? I am sure I don't have to tell you, but it's the conclusion of the National Model Railroad Month train layout visits with Carolina Southern. If you haven't signed up already be sure to do so at the link below. You can still register for the final weekend.

Speaking of that, I have a lot of work to do I suppose for my visitors next weekend. I am one of the hosts for the southern side of the division and things have changed quite a bit since last time. I have started a new HO layout. The challenge though is this - I am flying out for work on Monday and won't return until Thursday. So the key is to just share the love of the hobby as Andrew pointed out in his Superintendent's Corner. It doesn't even have to be a layout at all. It could be a favorite structure, or some favorite scenery, or a new technique you want to share. The key is for us to have community. That's what takes a fun hobby and supercharges it with friends and a good time.

Today has been a good time as well. I'm at the Newton Depot enjoying the swap meet that's going on today. All the friendly faces and all the folks who share the common love of model trains. It just makes you happy, you know? Happy November everyone!

Reminder! Signup for National Model Railroad Month layout visits [here!](#)

Division and Regional News

Wade's Train Town

Wade's Train Town – October Stats

Contributed by Ed Smith, MMR

Open houses: 4
Attendance: 54
Volunteers: Tim Rust, Joe Pulsone, Bob Halsey, Ed Smith [3]

The AP Report from the Plywood RR Desk

Contributed by Neal Anderson, MMR

I was unable to make the meeting last time. What I have seen coming up is, the members that want things evaluated to get a merit award will have several times to have the object done.

You will have :

- RMU
- Mid-Eastern Convention
- National Convention (Tenn)

For the ones that would like to work on the Chief Dispatcher AP Award . Classes will start back up in January. Please contact me with an email to be put on the list.

P.S. I made up Merit awards that will last a long time. So if you are looking for the new logo you might have to wait a while.

P.P.S: The NMRA is changing the paperwork on many AP Awards. I will be looking into the changes that have been sent to me.

CSD Monthly Meeting Notes

Contributed by Dave Myers, CSD Clerk

Carolina Southern Division, Mideast Region
National Model Railroad Association
Monthly Meeting
October 11, 2025

Attendance: 9 in person, 2 online

The October meeting of the Carolina Southern Division was held at the Northern Recreation Center in Cornelius NC

The Superintendent called the meeting to order at 10:26.

Tim Rust reported that "Train Town" is still going well averaging over 20 visitors each Saturday. The Newton Depot model train swap meet will be conducted on November 1.

The Superintendent reported on the following:

1. Several Achievement Program awards are pending.
2. The National Model Railroad Month layout tours will begin on Saturday, October 25. This is a week earlier than last year to avoid the Thanksgiving holiday weekend. Registration for the tours is on the Division website.
3. NMRA Vision 2035 is a project intended to bring the NMRA into "the modern era" with respect to technical capabilities, marketing, etc. Local logos will be replaced by a uniform NMRA logo promised by November 1. Divisions will be known by their names and not numbers. Banners with old logos will be replaced by the NMRA.
4. There will be no monthly meeting in November due to the layout tours.
5. There will be no monthly meeting in December due to the holiday season.
6. The Annual Meeting of the Carolina Southern Division will be held on Saturday, January 17, 2026, at 10:00 a.m., in the meeting room at the Newton Depot. Lunch will be provided. The meeting will be "Zoomed" for those unable to attend in person.
7. Elections will be held at the annual meeting.

There was no additional old or new business.

Andrew Stitt made a presentation on techniques for staining wood for realistic appearance.

Joe Skorch made a presentation on the use of Pan Pastels for weathering rolling stock and structures.

The Superintendent adjourned the meeting at 11:35.

David Myers,
CSD Clerk

2025 CSD NMRA National Model Railroad Month Celebration

Contributed by Dave Thrams

Our second National Model Railroad Month celebration is a go and it will be another good one!! Eighteen layouts are scheduled to be open. Thank you to all the layout owners that are opening your layout and homes to us. We had a great time last year, and I hear all the visitors were great, but I want to stress again to our visitors, the importance of respecting these layouts and homes we will be visiting.

The schedule is slightly different from last year. Our first open house Saturday is in October! October 25th will be the Northeast CLT area. This removes the weekend before Thanksgiving to not conflict with the holiday.

Layouts are open from 10am – 3pm, except on November 1st, the Cherryville Model RR Club will be open from 10 am – Noon and is annotated with * on the schedule below.

Registration begins October 1st and ends the Sunday before an open house. To visit a layout, or many layouts, you need to register on the CSD website at carolinasouthern.org. A day or two after registration ends, you'll receive the home addresses of the layouts and the layout owners will get a list with your name on it so they know who is visiting.

To help you plan your visits, see the layout list below and click on this link to take you to the CSD webpage at [CSD Member Layouts \(carolinasouthern.org\)](http://CSD Member Layouts (carolinasouthern.org)). This page shows CSD member layouts for us to view online anytime and not just for this event. Most of the layouts below are on the CSD website, but also, not all the layouts on the website are open for this event.

The registration page will list the open layouts and you can register for as many or as few you want to visit. Planning ahead seems crucial if you want to see multiple layouts in 5 hours. Thank goodness for GPS mapping!

November 8: 10 am –3 pm Southeast CLT **(Registration closed for this week)**

<u>Name</u>	<u>City</u>
Fred Miller	Charlotte
Dave Myers	Waxhaw
Dick Bronson	Waxhaw
Tim Rumph	Lancaster
Gordon Miller	Matthews
Chad Barnette	Fort Mill
Dylan Petro	Fort Mill

November 15: 10 am –3 pm (Northwest) Hickory/Statesville

<u>Name</u>	<u>City</u>
Seth Gartner	Charlotte
Neal Anderson	Statesville
Ed Smith	Taylorsville
Wades Train Town	Newton
John Short	Nebo

Have a great time visiting these layouts and their owners. Enjoy their efforts and please thank them for allowing us to view their labor of love.

A Jingle for Shingles

Contributed by Chad Barnette, Editor

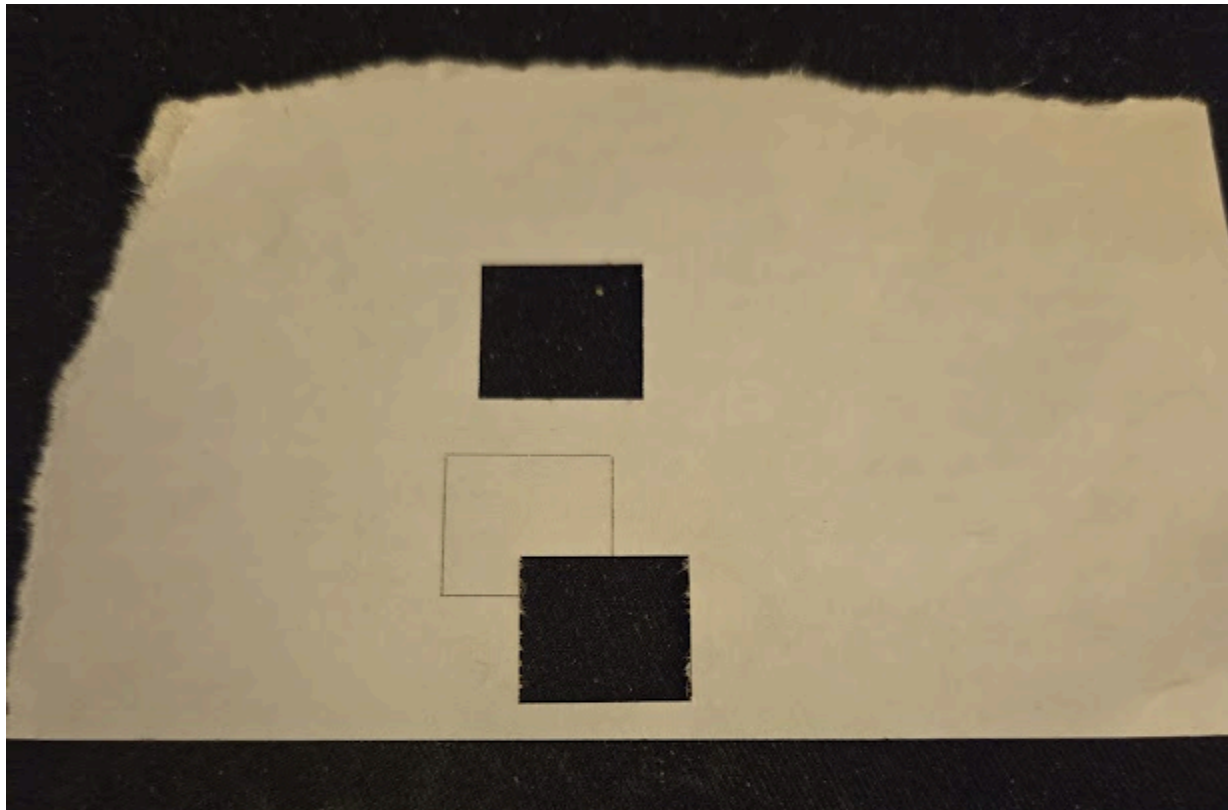
“OK”, I tell myself....”it’s time”. It’s time to dust off the laser engraver again. The more time I spend away from it, the more I feel anxiety about attempting to use it again. This time though, it’s different. I’m getting ready to attempt something I have never done before I have always read that I should be extremely cautious about laser cutting paper. Lasers and paper could cause a fire after all.

Fast forward to today. For a combination of reasons - one of which is the fact that I don’t love the texture I get from 3D printing my shingles. Even if the printing is dimensionally accurate, there’s something missing that only the application of shingles can give you. I was never able to find a good shingle product in N-scale. Plus, N-scale shingles are incredibly small. Now that I am working on an HO layout, I wanted to try again to do shingle application.

This time there are plenty of commercially available options, but many of them employ the use of lasers. Hey, wait! I have one of those. Thankfully I have recently reassured myself that even if I cause a fire it will be ok given the precautions that I have taken

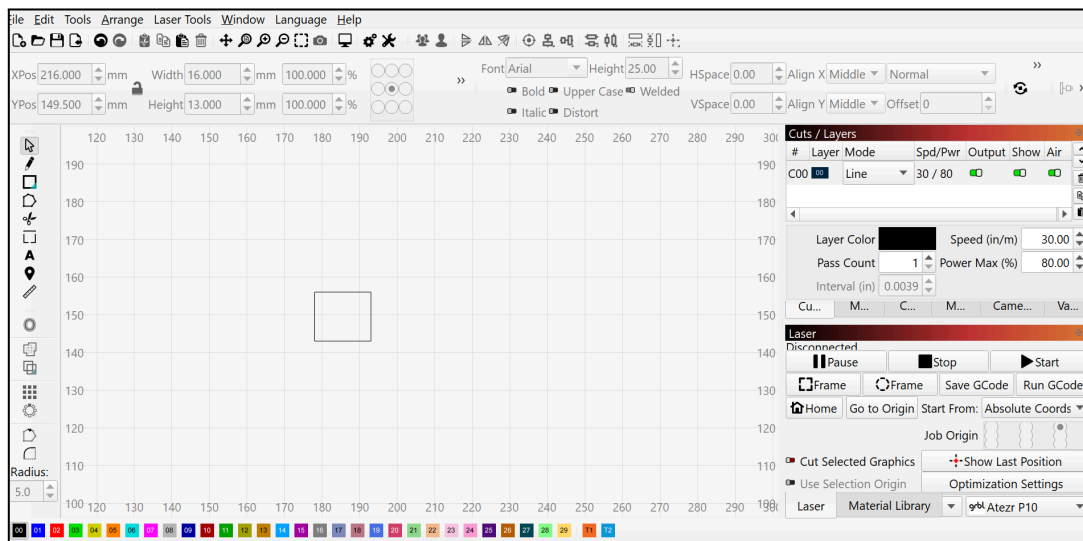
. That includes, but is not limited to, the fire retardant cover that is purpose built for my specific laser. So I put fear aside, cut some pieces of paper, and get to work.

And that takes us to the following photo.



I did it! Yes!!! What's noticeably absent from this picture? Char marks along the edges of the path of the laser. The air assist is doing its job in perfect form to prevent the charring of the delicate paper. Suddenly my fears have been washed away, and the only thing that remains is possibility!

Next time we talk, I will share with you my new shingles, and hopefully an example of the application of said shingles. Meanwhile, below are the settings I used in Lightburn in case you want to attempt the same (and you happen to have a 10W diode laser).



Help Wanted

Contributed by Andrew Stitt, Superintendent

CSD Program Chair – The Division needs someone to take on the responsibility of arranging for programs to be scheduled and presented at Division meetings. This can be accomplished by doing the presentation themselves, getting a commitment from someone else to make the presentation, or arrange for presentations to be conducted remotely (via Zoom). When the presentation has been established, the who, what, when, where needs to be sent to the editor of the Brass Pounder and the webmaster prior to the meeting so they let the members know about the upcoming program.

RMU Chair – The Division conducts Railroad Model University (RMU) annually to provide all model railroaders within our area the opportunity to attend a day-long event featuring clinics on a wide range of model railroad topics. The chair is responsible for recruiting member and non member clinician presenters as well as setting the schedule for these presentations. The chair also coordinates with other Division members to enable them to secure a location for the event, schedule and promote the event, and assist with any registration or A/V issues.

Please contact me (superintendent@carolinasouthern.org) if you have any questions or would like to volunteer.

MER Business Manager – Works with both the leadership team of the MER and the NMRA national office in Soddy Daisy to develop and distribute membership rosters to the various Divisions throughout the MER. Other duties as assigned.

Please contact Gary Brown (vp@mer-nmra.com) if you are interested and want to have more information.

MER Editor for the Local – Maintains and publishes the MER newsletter. The editor also assists those desiring to have their work published in the newsletter.

Please contact Greg Warth (local-editor@mer-nmra.com) if you are interested and would like to more have information.

The Neuse River Valley Model Railroad Club

41st Annual RALEIGH FALL TRAIN SHOW

November 8 - 9, 2025

Saturday 9 am – 5 pm

Sunday 10 am – 4 pm

**Jim Graham Building
NC State Fairgrounds**

4285 Trinity Road, Raleigh, NC 27607

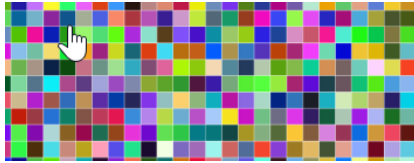
One of the largest train shows in the Southeast

- ♦ **480+ vendor tables and model train memorabilia**
- ♦ **16 operating layouts G to Z, Lego, Thomas the Tank**
- ♦ **Craftsman's Showcase - Displays & judging of craftsman built engines, rolling stock & structures**

**Admission: \$10 at the door covers both days
Children 12 and under free with adult**



**www.nrvclub.net
NRV.Shows@gmail.com**



Digital Distractions



All Trains Considered" is the title of a model train-focused YouTube show and series of videos hosted by "Ben Wayne" or "Ben's Trains". The content is typically short-form but also includes longer segments showing model railroad layouts and operations.

Host: Ben Wayne, who also goes by "Ben's Trains" on YouTube and Instagram. Focus: The videos concentrate on model trains, particularly O-scale, and the hobby of model railroading.

Check out their channel [here!](#)

Division Brass

<u>Superintendent</u>	Andrew Stitt	superintendent@carolinasouthern.org
<u>Asst. Superintendent</u>	Alan Hardee	assistsuper@carolinasouthern.org
<u>Clerk</u>	David Myers	clerk@carolinasouthern.org
<u>Paymaster</u>	David Thrams	Paymaster@carolinasouthern.org
<u>Director 2028</u>	Tim Rumph	director1@carolinasouthern.org
<u>Director 2026</u>	Joe Skorch	director2@carolinasouthern.org
<u>Director 2027</u>	Ed Smith, MMR	director3@carolinasouthern.org
<u>AP Chairman</u>	Neal Anderson, MMR	Apchair@carolinasouthern.org
<u>Webmaster</u>	Joe Skorch	Webmaster@carolinasouthern.org
<u>Newsletter Editor</u>	Chad Barnette	editor@carolinasouthern.org
<u>Program Chair</u>	Alan Mitchell	program@carolinasouthern.org
<u>RMU Chair</u>	Vacant	RMUchair@carolinasouthern.org